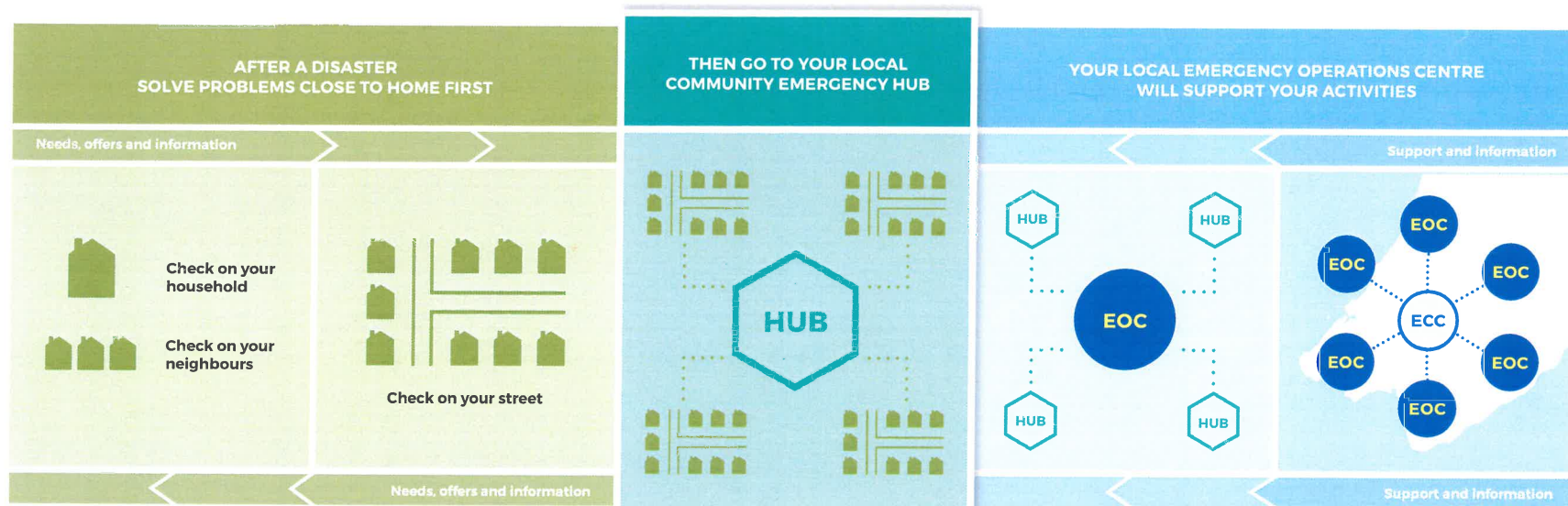


Community Emergency Hub

During disasters, councils and emergency services aren't the only ones responding. Communities have many of the skills and resources needed to solve problems and help each other. Community Emergency Hubs are a way for people to work together to solve problems locally, while still coordinating with councils about really big problems.



Solve problems close to home first. Do what you can to make you and your household safe. If you can help other households, or need help in yours, go out and check with your neighbours.

If there are people in your neighbourhood who are able to help others or need help themselves, check the surrounding streets to see what can be done. Many problems can be solved at this level.

Hubs are a place for the community to congregate and coordinate their response to assist each other. They are not reliant on the physical building, if the place where a Hub starts becomes unsuitable, you can always move to a better venue.

If help is needed within your community that the community can't provide themselves, let the EOC know. They may be able to get help from a community near you or from city resources. Likewise, if you have people or resources that could help outside your community, let the EOC know.

If more than one EOC is active, they might need to coordinate with each other. They can do this through the Emergency Coordination Centre, which connects councils with regional and national resources.

Community Emergency Hubs

Empowering our community to help itself

Community Emergency Hubs are about the community coming together to do what it can to help each other - people helping people with what they have available.

The Wellington Region Emergency Management Office (WREMO) works with our communities to empower and promote a community-led response to the challenges communities will face during a disaster.

As we saw in Christchurch and other disasters around the world, people want to help those in need. After a significant emergency, such as an earthquake, the community will naturally come together for company, to share their stories about their experience, find out information, offer assistance to those who need it, and look for assistance.

Community Emergency Hubs (formally known as Civil Defence Centres) are pre-identified places for the community to coordinate their efforts to help each other during and after a disaster. Community Emergency Hubs will be opened by people in their community, not official staff, when there is need for the

community to help itself, such as when there has been widespread infrastructural damage, damage to buildings and roads, or communication networks are down for extended periods.

After helping their household and neighbours, people should head to their local Community Emergency Hub to offer what they can.

Community Emergency Hubs are located at local primary schools, community centres, and other community gathering spaces. WREMO has made arrangements with these hosts to allow locals to open up the venue in times of need.

Community Emergency Hubs are equipped with an operating guide to help describe the most efficient way to run the Hub, a map, a small amount of stationery to assist in coordinating whatever the community feels should be done, and a radio so the community can communicate with the official Emergency Operations Centre. There are no caches of emergency supplies at Community Emergency Hubs. Community Emergency Hubs are not Emergency Assistance Centres (formerly known as Welfare Centres) where official

government support can be accessed.

Through Community Response and Resilience Planning, WREMO works with communities to identify community strengths and resources that could be useful during a disaster, vulnerabilities that the community should check during a disaster or consider mitigating beforehand, and potential solutions to the challenges a community will face during a disaster. These are recorded in a Community Emergency Hub Guide that also outlines how to run the Hub.

WREMO provides free training to the community to help people get prepared for an emergency, and share ideas on how the Community Emergency Hub could run smoothly.

For more information visit www.getprepared.org.nz/Hubs